

IMPACT THEATRE FOR IMMEDIATE RELEASE

P.O. BOX 12666 · BERKELEY, CA 94712-3666 · 510 464-4468 · IMPACTTHEATRE.COM
PRESS CONTACTS: MELISSA HILLMAN / CHESHIRE ISAACS · 510 464-4468 · INFO@IMPACTTHEATRE.COM

IMPACT THEATRE CAPS ITS SEASON OF NAUGHTY DELIGHTS WITH THE WORLD PREMIERE OF *IMPACT BRIEFS 8: SINFULLY DELICIOUS*

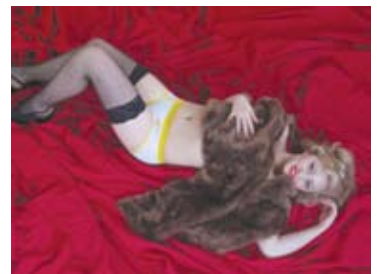
A program of short comic plays and burlesque opens Friday, June 15, 2007

BERKELEY, CA, MAY 21, 2007—Impact Theatre finishes off its 2006–07 Season of Sin with a bang, saving the most sinful for last: *Impact Briefs 8: Sinfully Delicious*, directed by Dawn Monique Williams, opens June 15, 2007 and plays Thursdays through Saturdays at 8pm until July 21, 2007 (with a pay-what-you-wish preview June 14) at Impact's home, La Val's Subterranean in Berkeley.

Since its founding in 1996, Impact has presented seven productions of *Impact Briefs*, collections of comic ten-minute plays. “This isn't sketch comedy,” Impact Artistic Director Melissa Hillman says. “These are fully formed plays, with sharply drawn characters and conflicts—but they get the job done in ten minutes instead of two hours.”

Briefs 8: Sinfully Delicious takes the series a step forward with a collection of shorts that are fueled by one or more of the seven deadly sins. Culled from a record-breaking 400-plus submissions, the plays cover a trip through hell; a mysterious dead clown; a torrid affair amid the search for the perfect cup of coffee; a wife who gets greedy in bed; a suicide hotline; and many more deeds that would damn the soul.

Briefs 8: Sinfully Delicious also adds a spicy new element to the mix: **burlesque**. Choreographer Helen Nesteruk explodes the conventions of the form, fusing tease and comedy into a mouthwatering new confection. “Wear something light,” Hillman advises. “It's going to get hot down there in the Subterranean.”



Press photos in different sizes
are available for download at
impacttheatre.com/press

Tickets for *Briefs 8: Sinfully Delicious* are \$15 general, \$10 student/senior/TBA members. **Tickets are available online at impacttheatre.com**. Pay-what-you-wish rush tickets are available for Thursday night performances beginning a half hour before the performance.

For more information, please call 510-464-4468 or visit impacttheatre.com. Press photos in a variety of formats and PR archives can be found at impacttheatre.com/press.

ABOUT IMPACT THEATRE

Since 1996 Impact Theatre has spoken to a new generation of theatregoers and enthusiasts alike who want to see something fresh and bold on stage. Impact's audience ranges from students to professionals to seniors, all of whom share a taste for exciting, unpretentious theatre that doesn't conform to stale assumptions of what constitutes high culture.

Impact's primary mission is to directly contribute to the future of American theatre through focusing on new plays by emerging playwrights. Impact has produced 17 full-length world premieres, including 12 by local playwrights, as well as dozens of world-premiere ten-minute plays by burgeoning writers nationwide in the *Impact Briefs* series. Impact also prides itself on its fast-paced, vital, contemporary spins on classic drama.

Impact shows compel, provoke, and inspire, at prices everyone can afford. And nowhere else in the Bay Area can you eat pizza and drink beer while you're watching a play. **The *Daily Californian* included three Impact shows in its list "Top Ten Plays of 2006."**

FOR CALENDAR EDITORS

PRODUCTION: Impact Theatre presents *Impact Briefs 8: Sinfully Delicious*
directed by Dawn Monique Williams

WHEN: June 15–July 21, 2007 (preview June 14)
Thursdays, Fridays & Saturdays at 8pm

WHERE: La Val's Subterranean, 1834 Euclid Ave, Berkeley, CA 94709

ADMISSION: \$15 general / \$10 students/seniors/TBA
Thursday pay-what-you-wish rush, at the door, cash only, no reservations

MORE INFO: impacttheatre.com · press photos and PR archives at impacttheatre.com/press

BOX OFFICE: impacttheatre.com · brownpapertickets.com

PRESS CONTACT: Melissa Hillman or Cheshire Isaacs
510 464-4468 · info@impacttheatre.com

Leon Goertzen, a member of the cast, is a member of Actors' Equity Association. An Equity-approved project.

#