

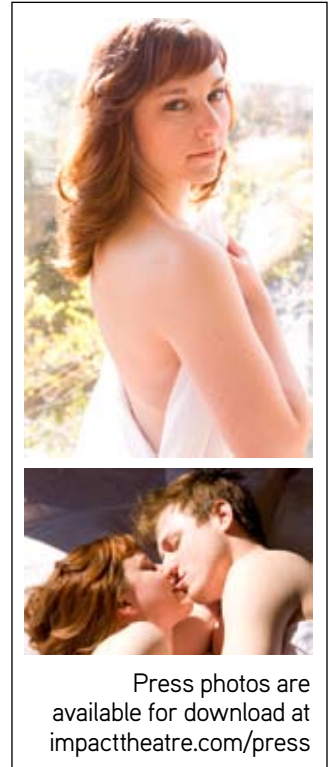
IMPACT THEATRE TAKES ON ITS FIRST NON-SHAKES CLASSIC

John Ford's *'Tis Pity She's a Whore* opens Friday, May 2, 2008

BERKELEY, CA, MARCH 31, 2008—Impact Theatre concludes its 2007–08 Seat of Our Pants Season with John Ford's *'Tis Pity She's a Whore*, directed by Impact's artistic director, Melissa Hillman. *'Tis Pity* opens May 2, 2008 and plays Thursdays through Saturdays at 8pm until June 7, 2008 at Impact's home, La Val's Subterranean in Berkeley.

Known for championing new plays and emerging playwrights, **Impact** (labeled "feisty" by the *SF Chronicle*) has also gained a solid reputation for Hillman's reinvented, contemporary stagings of Shakespeare's works: Last season the *Daily Californian* wrote, "Impact Theatre's production of *Measure for Measure* is a rousing success, a sex, drugs and rock 'n' roll adaptation that the Bard himself would approve.... **This is Shakespeare as it was meant to be performed: bold, confrontational and in your face.**"

Hillman, who joined Impact as dramaturg at its founding in 1996 and has run the company since 2001, should know—she has a Ph.D. in theatre from UC Berkeley. **Matching an academic's deep knowledge of history and language with a Bay Area-born post-punk's disdain for stale productions, Hillman has repeatedly won acclaim for her fresh visions of classic texts.**



Press photos are available for download at impacttheatre.com/press

Now, after five outings with Shakespeare, **Impact takes on its first non-Shakes classic, Ford's *'Tis Pity She's a Whore*, a down-and-dirty tale of incest, treachery, religious politics, and murder.** Giovanni and Annabella are in love. Trouble is, they're brother and sister; worse, she's pregnant. Under pressure from the friar Bonaventura, Annabella chooses Soranzo, the least unappealing of her unrelated suitors. Soranzo, though once smitten, discovers the pregnancy—and who the father is—and plots his revenge. Amid this whirlwind, the doctor isn't who he says he is, an imbecile isn't the lover he thinks he is, and no one can be trusted.

"There's a huge hunger for this play," Hillman says. "I've been thinking about it for years and finally felt now was the right time to do it. I'm obviously not alone, because we had record-breaking audition requests for this show, and the result is a powerhouse cast."

'Tis Pity features Marissa Keltie, who enchanted audiences and critics alike as Isabella in *Measure for Measure* and Desdemona in *Othello*, as Annabella. The cast includes returning Impact actors Miyuki Bierlein (this season's *Money & Run*), Sarah Coykendall (*Measure*), John Ferreira (*Othello*, *Hamlet*), Warden Lawlor (*Money & Run*), John Terrell (*Sleepy*), and Seth Thygesen (*Measure*, *Money & Run*), as well as

newcomers Robert Bergin, Mayra Gaeta, Mary Ann Mackey, Kendra Oberhauser, Harold Pierce, Jai Sahai, and Tim Redmond. Berkeley Repertory Theatre's Dave Maier choreographs the fights.

"This is a gritty, intimate play that explores how overwhelming passion can convince us to make choices we know are disastrous," Hillman says. "Just like with *Measure for Measure*, it belongs in La Val's Subterranean—our basement is the perfect setting for an intense, emotional, violent tragedy like this."

Tickets for *'Tis Pity She's a Whore* are \$15 general, \$10 student/senior/TBA members. **Tickets are available online at impacttheatre.com.** Pay-what-you-wish rush tickets are available for Thursday night performances beginning a half hour before the performance.

For more information, please call 510-464-4468 or visit impacttheatre.com. Press photos in a variety of formats and PR archives can be found at impacttheatre.com/press.

ABOUT IMPACT THEATRE

Since 1996 Impact Theatre has spoken to a new generation of theatregoers and enthusiasts alike who want to see something fresh and bold on stage. Impact's audience ranges from students to professionals to seniors, all of whom share a taste for exciting, unpretentious theatre that doesn't conform to stale assumptions of what constitutes high culture. Impact's primary mission is to directly contribute to the future of American theatre through focusing on new plays by emerging playwrights. Impact has produced 17 full-length world premieres, including 12 by local playwrights, as well as dozens of world-premiere ten-minute plays by burgeoning writers nationwide in the *Impact Briefs* series. Impact also prides itself on its fast-paced, vital, contemporary spins on classic drama. Impact shows compel, provoke, and inspire, at prices everyone can afford. And nowhere else in the Bay Area can you eat pizza and drink beer while you're watching a play. **The *East Bay Express* included Impact in its list "Top Ten Plays of 2007."**

FOR CALENDAR EDITORS

PRODUCTION: Impact Theatre presents *'Tis Pity She's a Whore*
by John Ford
directed by Melissa Hillman

WHEN: May 2 – June 7, 2008
Thursdays, Fridays & Saturdays at 8pm

WHERE: La Val's Subterranean, 1834 Euclid Ave, Berkeley, CA 94709

ADMISSION: \$15 general / \$10 students/seniors/TBA
Thursday pay-what-you-wish rush, at the door, cash only, no reservations

MORE INFO: impacttheatre.com · press photos and PR archives at impacttheatre.com/press

BOX OFFICE: impacttheatre.com · brownpapertickets.com

PRESS CONTACT: Melissa Hillman or Cheshire Isaacs
510 464-4468 · info@impacttheatre.com